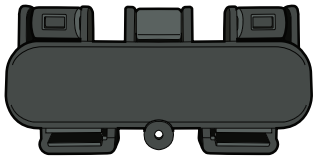


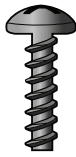
C7 - C8 Safety Feature Clamshell Installation

Tools Needed

1. Supplied hex key.



(1) Clamshell Female - #GP0032
(1) Clamshell Male - #GP0033



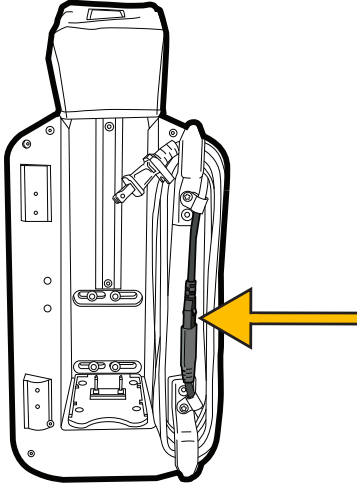
(1) Screw - #HWS005



(1) Hex Key - #HKEY4

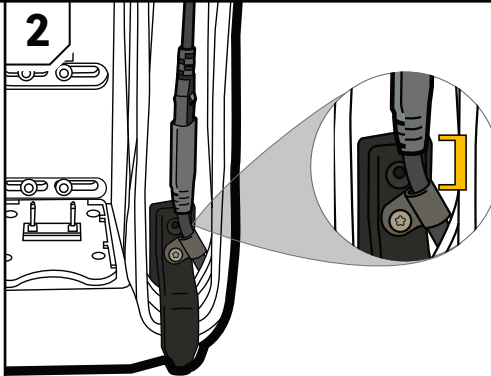
LS0036_021925

1



Locate the C7 to C8 connection extension on the front battery housing cord.

2

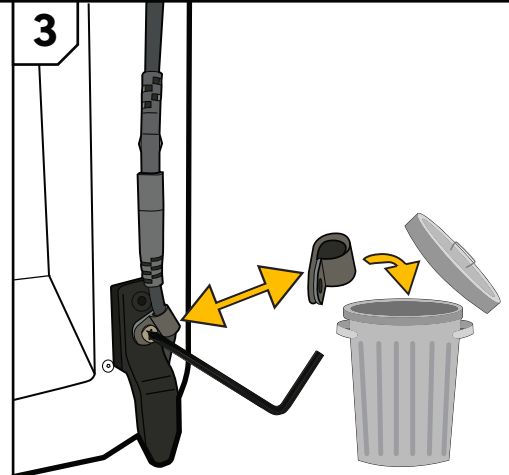


Check the gap between the bottom clamp and bottom of connection to determine if gap is wide enough for the clamshell by pre-fitting around connection.

If the gap is wide enough, proceed to steps 5-6.

If gap is too small, proceed to steps 3-7.

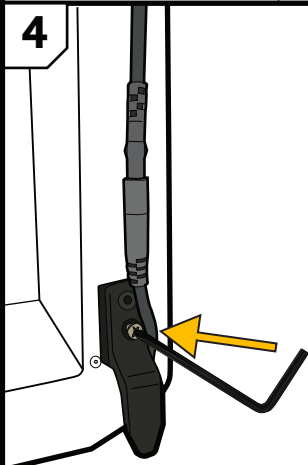
3



Use the hex key to undo the bottom clamp. Discard clamp.

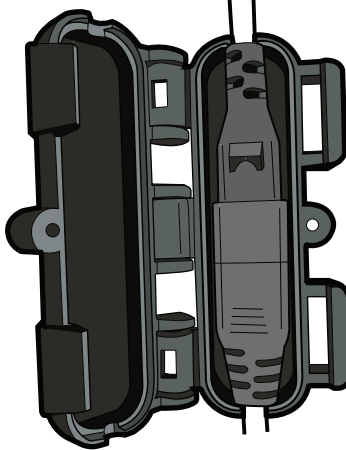
KEEP ORIGINAL SCREW AND CLEAT

4



After discarding the clamp, re-attach the original screw to the bottom cleat.

5

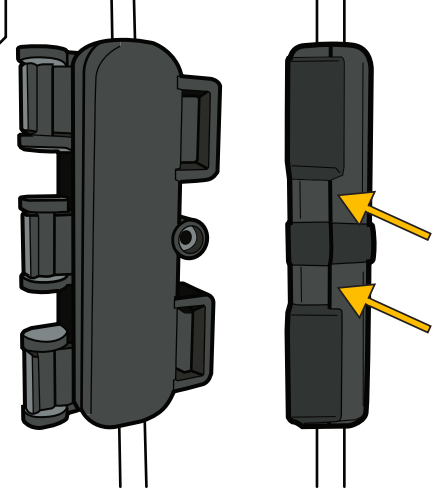


Take the provided clamshell and align with the connection.

Close the clamshell over the connection.

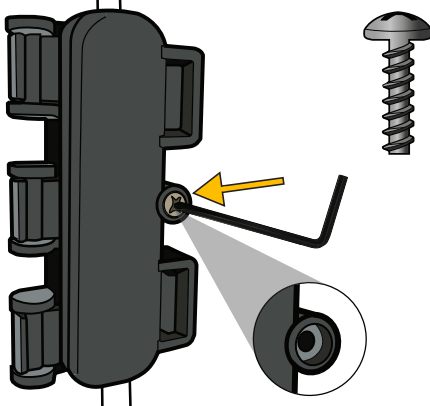
ENSURE THERE IS AN AUDIBLE SNAP ONCE CLOSED

6



ENSURE THE CLAMSHELL SEAMS ARE FLUSH WITH NO GAPS

7



Use the hex key and attach the provided screw into the hole location on the clamshell. Locate the side of the clamshell that has a divot in the hole location.

For video instructions, scan the QR code below.



KAIVAC®